

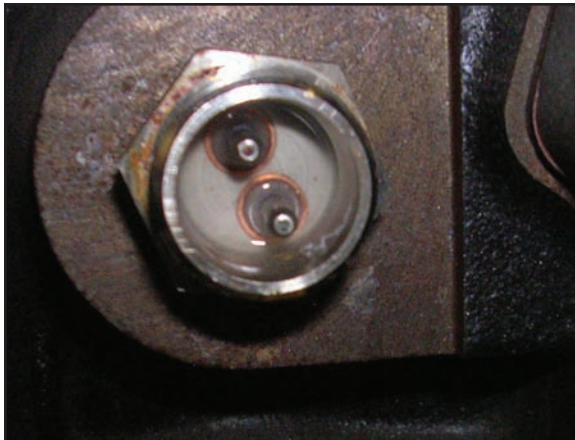
Installation: Block Heater Cord

No doubt, when you discovered that your Dodge Turbo Diesel truck did not have a block heater cord you were not pleased; pessimism prevails.

Wait, optimism overcomes – the truck's engine *does* have a block heater. However, where is the block heater located and how do you plug the cord in?



The block heater is located on the passenger side of the engine, about two inches in back of the oil filter. As you can see from the picture on the left, the screw-on plastic cover has been removed and there are two male extensions for the heater cord to plug into.



Also, you can see in the picture that the extensions are positioned at 11 o'clock and 5 o'clock. However, the position of the extensions does vary based on how the block heater was installed at the factory.



In order to get a better view and better access to plug the block heater cord in, you might find it easier to remove the air intake snorkel.



If you need more assistance, we are only a phone call away.

(770) 886-2500

Monday–Friday
8:30am–5:30pm EST

GENO'S GARAGE, INC.
1150 Samples Industrial Drive
Cumming, Georgia 30041

Installation: Block Heater Cord

BATTERY CHARGING

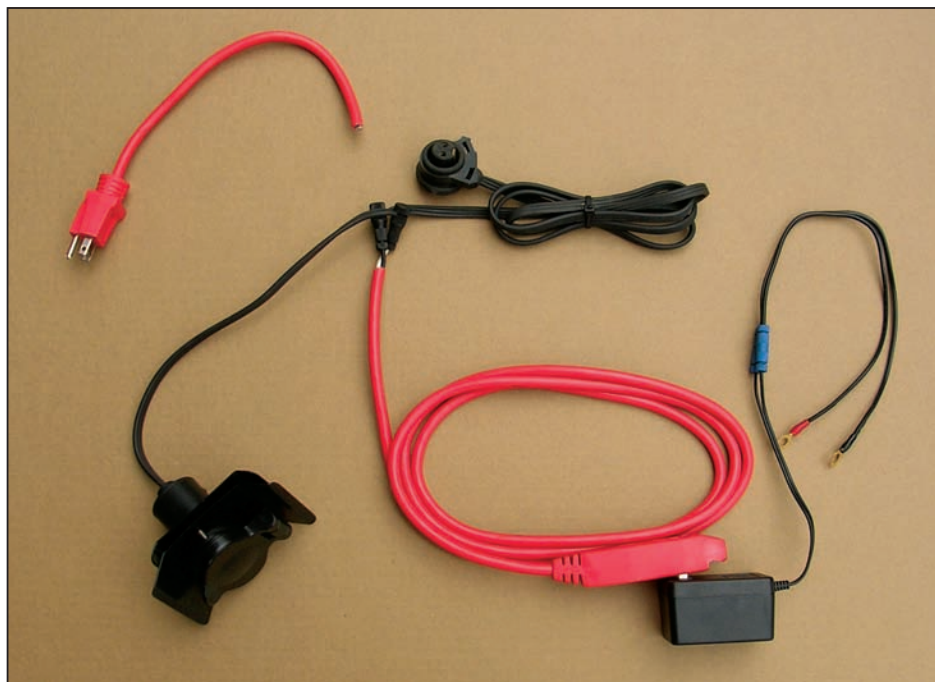
In a recent TDR magazine writer Jim Anderson wrote an article on batteries, so this might be a good spot to plug in another battery story on how to keep them going longer. I've found that occasionally "peaking up" the batteries really helps in firing up the diesels, especially on cold mornings. About once/month, I put the little "peaking" battery tender on the vehicle and it seems to extend the battery's life. I've got original '02, '03 and '05 batteries still going strong. The only problem is the pain of opening up the hood and clipping on the charging leads to the battery and then reversing that process when you're ready to go. The wife especially doesn't like to accomplish that task.

To solve this problem, I decided to adapt a block heater plug or a Geno's Block Heater Bumper Plug for the chore.

The tip is to wire-in an inexpensive battery trickle charger to the wiring of the block heater cable.

A word of caution: The instructions with the battery trickle charger say it should not be permanently installed. I will disregard the instructions.

A picture is worth 1000 words. Below is the universal electrical pigtail with a battery charger that will be permanently installed.



A Word From the Turbo Diesel Register

We hope you find this idea to be valuable. If you haven't already, please consider the TDR as a great resource for all things Dodge/RAM Cummins Turbo Diesel. Their website address is www.tdr1.com and an annual subscription to the membership club is \$35.00 per year. A great value. We couldn't do it without the support of their members.